

Electronic Planned Giving

Do you attend mass at St John Vianney's at Manly or St Jude's at Gumdale?
Do you or have you ever considered contributing to our Planned Giving Program?
Do you find it difficult to remember to bring your giving envelopes to mass, or have the correct money when you need it?



Do you know that we offer regular electronic giving options as an alternative?



Electronic giving is a convenient way for you to give regularly to our Planned Giving Program, and support the ongoing works of our parish community. The advantages of a regular electronic gift means you have the satisfaction of knowing that your funds are transferred automatically to your parish planned giving account, you don't need to find or carry cash each week, and if you are away from the parish, your gift takes place without you having to catch up on your return. It is a confidential, convenient and safe option, and saves the parish the cost of providing envelopes. Electronic giving is flexible, and can be changed or cancelled at anytime as necessary.

What are the advantages for the parish?

By giving electronically, the parish is guaranteed your gift on a regular basis, budgeting becomes more accurate and the necessary cash flow is constant. It saves time and is much safer for the parish as there is less cash to handle, with less risk involved in handling cash donations, and it reduces the work of voluntary counters in the parish.

Are there any costs?

We do not charge for these options, but you may wish to check with your financial institution as they may charge a transaction fee, depending on the type of account you have with them.

How does it work?

If you are interested, please collect ONE of the following forms: (1) Offertory – Donations via Credit Card or (2) Direct Debit Request – Planned Giving, authorising the Archdiocesan Development Fund (ADF) (as agents for the parish) to transfer your regular gift automatically from your credit card or bank, building society or credit union, to the parish's planned giving account on a monthly basis. Only one form needs to be completed for either payment system. Then deliver or post the completed form to the parish office.

How do I complete the form?

It is preferable that electronic transactions occur once a month and on the same date. Alternatively there are options for weekly or fortnightly deductions. It is also worth remembering that if you currently give weekly and convert to monthly the calculation for your giving would be, weekly pledge amount multiplied by fifty two (weeks) then divided by twelve (months). E.g. \$15/week would be $\$15 \times 52 = \$780 / 12 = \$65$ month

Do you have any questions?

Contact the Planned Giving Team.

Or if you have any problems or queries please do not hesitate to contact the Parish Secretary:

Address: PO Box 5174 Manly QLD 4179

Email: manly@bne.catholic.net.au

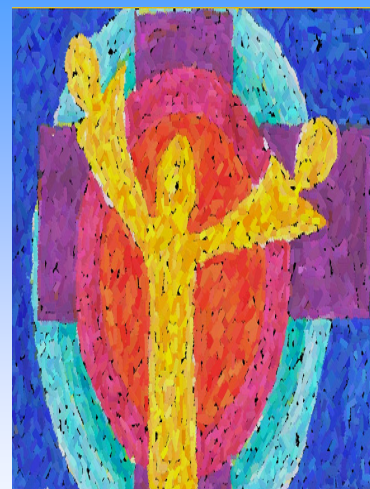
Phone 313 12610

Office Hours: Monday, Wednesday & Friday, 9.00am to 2.30pm



St John Vianney's Manly and St Jude's Gumdale

MANLY PARISH PLANNED GIVING PROGRAM 2012



OUR CHURCH
OUR COMMUNITY
OUR COMMITMENT

*Give, and it will be given
to you. - Luke 6:38*



OUR CHURCH – OUR COMMUNITY – OUR COMMITMENT

As a member of our Parish community, welcome to our new Planned Giving Program. It is over ten years since a new Planned Giving Program appeal has been made in our Parish. This new program provides current givers the opportunity to reflect on their current level of giving, and encourages new parishioners and young workers to join the program. All parishioners are invited to join the giving.

Each and every one of you is an important member of our Parish. Whether you attend Mass at Manly or Gumdale, you will have experienced the sacraments in our Parish. Maybe you were baptised or married here, or your children in our Parish School, are now of the age to celebrate Reconciliation, First Eucharist and Confirmation. Funerals for loved ones and personal reconciliations and advice are other offerings from your Parish.

Blessed by God, as we are, with countless gifts and abilities, we are called to make a financial commitment so the Parish can carry out its mission. Financial commitment through the Planned Giving Program allows our Parish to develop a realistic budget to meet existing needs and obligations and plan for future developments. The Parish Finance Committee is seeking a 15% increase in pledges from both collections for a total of \$3000 per week. We are optimistic this goal can be achieved with your tremendous generosity. We ask for serious consideration from you when arriving at your new pledge.

For three weekends in November (Sundays 11th, 18th and 25th) 2012 you will be asked to make a pledge. Simply fill out the tear-off card and place it in the sealed box at Mass. Should you be away over this time still fill in the tear-off card on the brochure and return it to the Parish Office.

A quick easy way to express your commitment is through the Electronic Funds Transfer systems available. See the back page for details. Direct any questions you have to the Parish Office or the Planned Giving Team. Remember the stone rejected by the builders has become the cornerstone. Each of you is that new stone in Christ.

May God bless you always.

Fr Frank Jones Parish Administrator



Current Givers Example Guide		
Current Giving Pledge	Increase pledge by 15% to:	Your extra commitment per Year
\$5 / w	\$5.75 / w	\$39
\$10 / w	\$11.50 / w	\$78
\$20 / w	\$23 / w	\$156
\$110 / m	\$126.50 / m	\$198
\$350 / qtr	\$402.50 / qtr	\$210
\$1500 / yr	\$1725 / yr	\$225

Who could / should give	
<input checked="" type="checkbox"/>	Current envelope contributors
<input checked="" type="checkbox"/>	Loose plate givers
<input checked="" type="checkbox"/>	Young people now working
<input checked="" type="checkbox"/>	Families from our Parish School;
<input checked="" type="checkbox"/>	Regular visitors
<input checked="" type="checkbox"/>	Those who value our community

MY PLEDGE - ST JOHN VIANNEY'S & ST JUDES CATHOLIC CHURCHES

Name: _____

Address _____

Post Code _____

Phone (H) _____ (M) _____

Email _____

Are you currently a contributor through: (Please circle) Envelopes Electronic Funds Neither

Would you like to talk with a member of the Planned Giving Team :

(Please circle) YES NO

FIRST COLLECTION:

My / Our pledge is: \$ _____

Per WEEK MONTH QUARTER HALF YEAR YEAR (Please circle)

SECOND COLLECTION:

My / Our pledge is: \$ _____

Per WEEK MONTH QUARTER HALF YEAR YEAR (Please circle)

My Planned Giving Number _____ (Parish to complete)

I would like my contribution to be debited from my: (Please circle) Bank account Credit card

Please complete the Electronic Fund transfer form available at the back of the church.

Please complete the attached PLANNED GIVING PLEDGE CARD and bring to Mass on one of the 3 Sundays of the program. We ask that you return the completed card by **MONDAY 26th November 2012** using one of the options below:

- Place it in the sealed box provided at mass on any of the Saturday or Sunday services
- Drop it into the Parish Office
- Mail to: Manly Catholic Parish
Planned Giving Committee
PO Box 5174 Manly QLD 4179

